



RKEYS250311078

2025 03 19

1 4

458

458

/  
2025 03 12

2025 03 12 2025 03 14



(F) (Cl) (Br) (I)	T/ZZB 3767-2024	IC

(F)	mg/kg	50	N.D.
(Cl)	mg/kg	50	N.D.
(Br)	mg/kg	50	N.D.
(I)	mg/kg	50	N.D.

1. mg/kg= ppm=

2. N.D.= (<MDL)

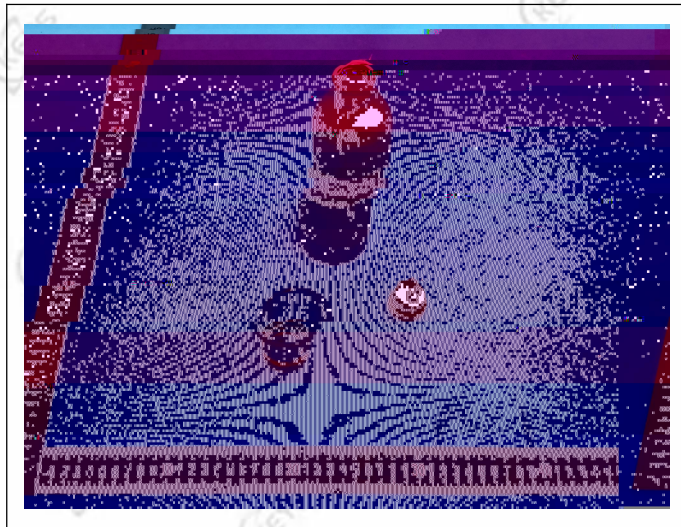
3. MDL =

4. : Cl 900 mg/kg, Br 900 mg/kg, Cl+Br 1500 mg/kg,





1	



\*\*\*

\*\*\*

